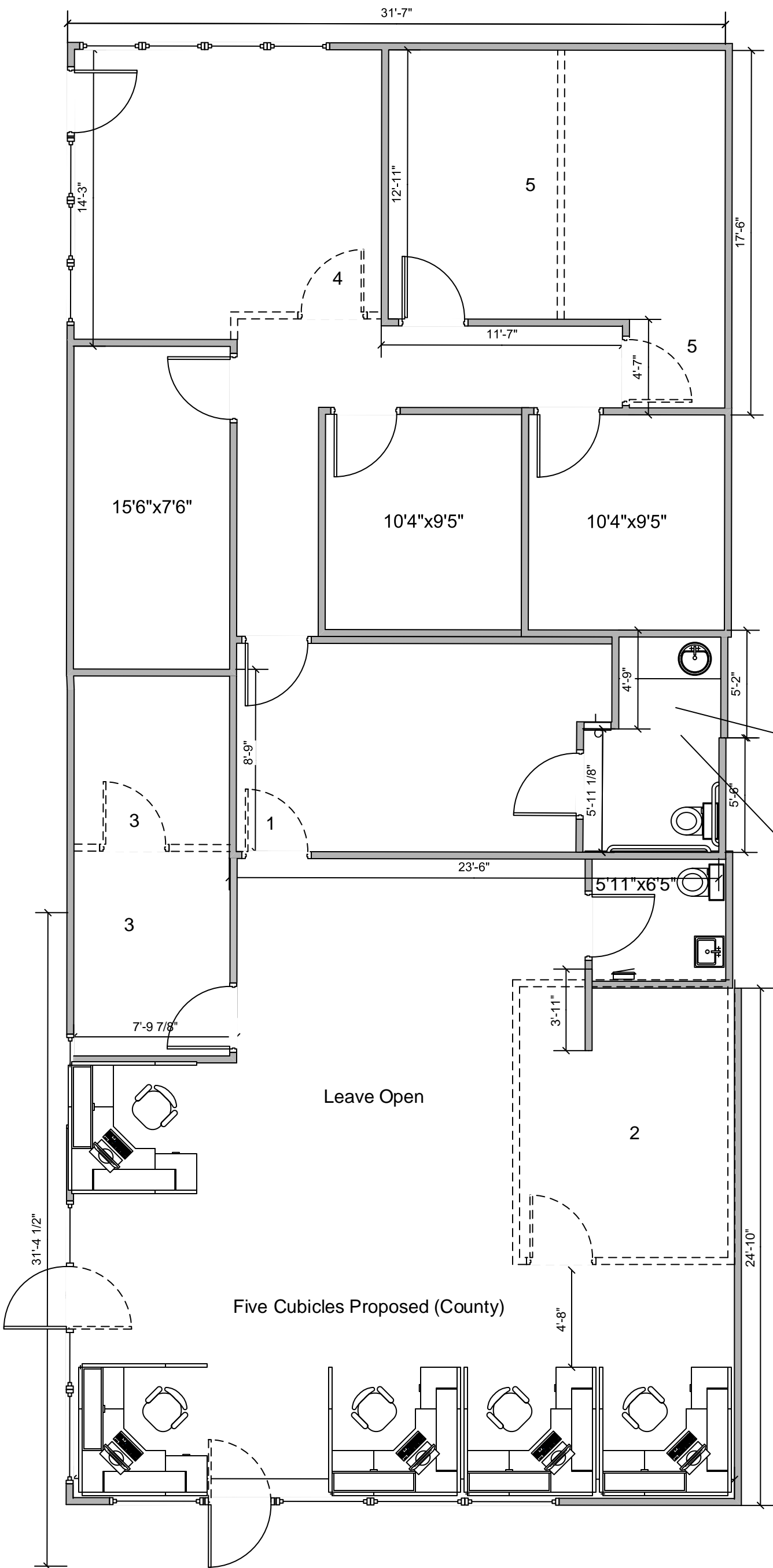


1411 Yuba Street:  
2,192 s.f.

1612 Market Street: 1,300 s.f.



1. Install door with lockable lever hardware connecting 1612 Market and 1411 Yuba.

2. Create office, approximately 10' x 13', in 1612 Market. Remove existing interior wall protruding into proposed space if possible.

3. Remove existing south wall and door of current 8'1" x 7'9" office and construct new east and south wall with a door. South wall to be placed at/after the 1<sup>st</sup> glass section.

4. Install new wall and door to enclose open area, northwest corner of 1411 Yuba.

5. Split large office, northeast corner of 1411 Yuba into two approximately equal offices and add a door into the newly created office on the eastern side of this split. Adjust lighting, HVAC, and fire sprinklers as necessary.

Baby changing table requested.

ADA Compliant Restroom