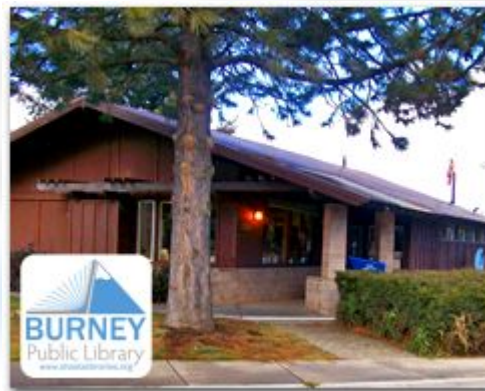




2017 Annual Report

Mission Statement

The Shasta Public Libraries (Library) provide information, lifelong learning, inspiration and enjoyment to people of all ages through reading and technology.



Programs



PROGRAMS

1,382
OFFERED



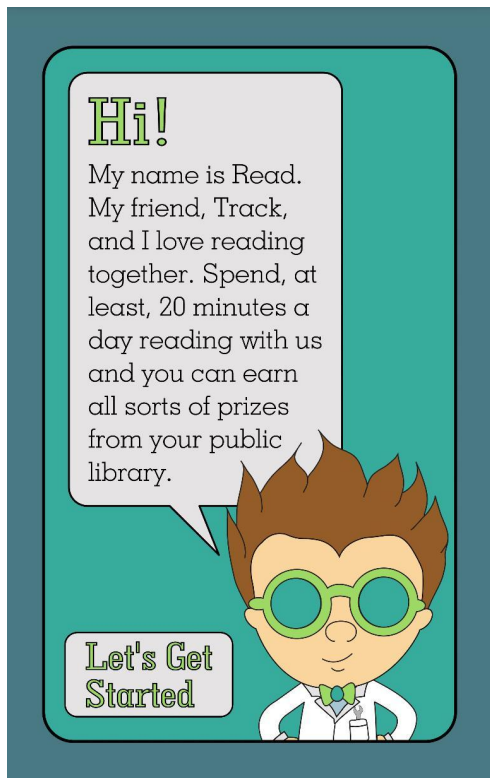
PROGRAM ATTENDANCE

40,812
ATTENDEES



REV, RUMBLE & ROAR

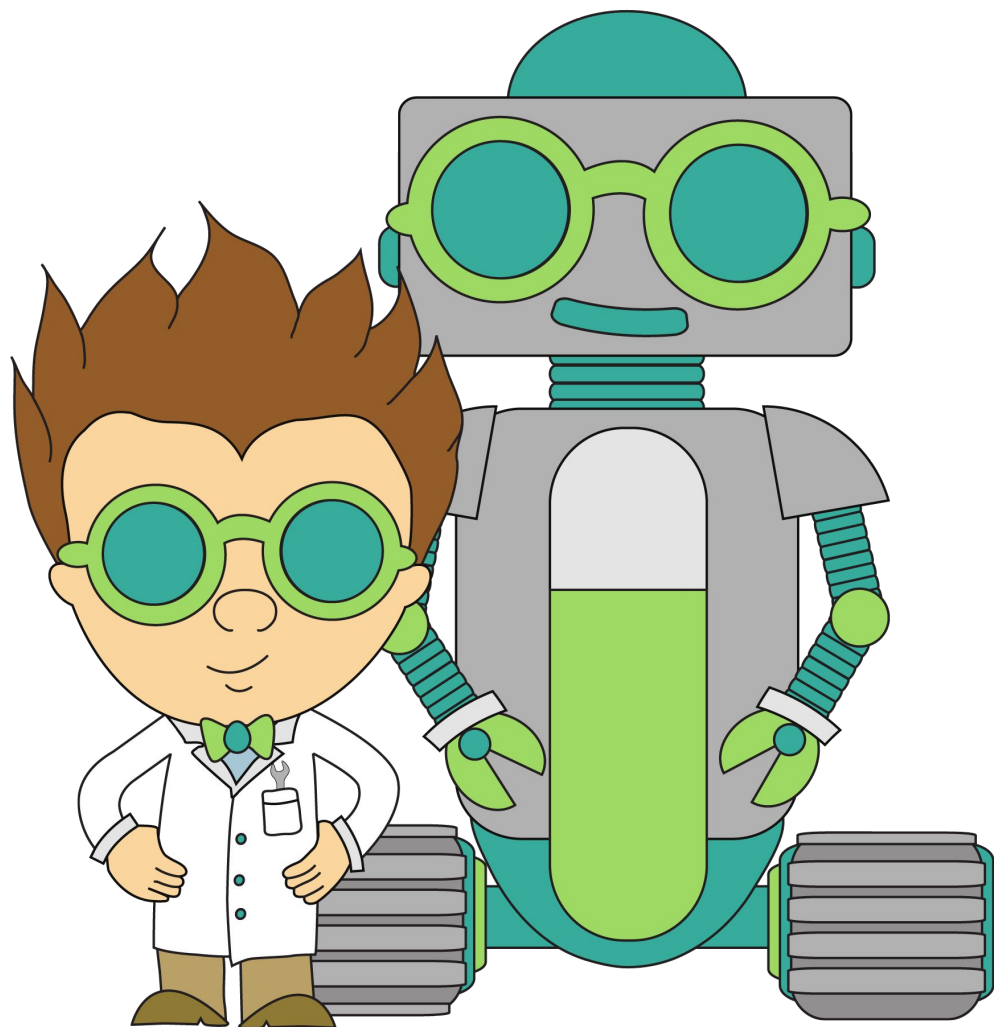
2,040
ATTENDEES



READ - N - TRACK

292

REGISTERED USERS



Programs



Shasta Early
Literacy Partnership



REACH HIGHER
shasta EVERY STUDENT
EVERY OPTION

School Library Card Initiative



SCHOOL CARD INITIATIVE

13 of 26
SCHOOL DISTRICTS

Partnerships

Outreach & Offsite
Programming

Early Literacy

Local Businesses

Outreach At Home...



Accomplishments



10
YEARS


SHASTA
Public Libraries
www.shastalibraries.org





What we are working on now...



A ENTRY FEATURES

- CONTEXTUAL ARBOR INSIDE GATED ENTRY (picture 1)
- BENCH SEATING
- ACCENT PLANTS
- ADD BIRCH LOGS/DRIED BOTANICALS TO INTERIOR OF BUILDING, APPROACHING DOOR TO COURTYARD
- ADD DIRECTIONAL SIGNAGE NEAR STORYTIME CIRCLE ON CURVED EXTERIOR BUILDING WALL, ADD DECORATIVE PANELS

B GATHERING AREA

- EXISTING ROCK SEATING LINING PATHWAY

C MUSIC & MOVEMENT

- COMPOSITE WOOD STAGE FLUSH WITH EXISTING GRADE AT REAR, ADD STEP AT FRONT TO DECREASE HEIGHT AS GRADE SLOPES DOWN AND ACCESS HATCH OVER EXISTING AREA DRAIN (picture 2)
- OPTIONAL OVERHEAD PERGOLA
- COMPACTED CRUSHED STONE (DG) PATH TO MEET FLUSH WITH STAGE, UTILIZE EXISTING CURB FOR EDGING
- MARIMBA (picture 5)
- STORAGE FOR DANCING SCARVES AND HAND HELD INSTRUMENTS
- BENCH SEATING
- ADD SHADE SAIL AS NEEDED

D OPEN AREA

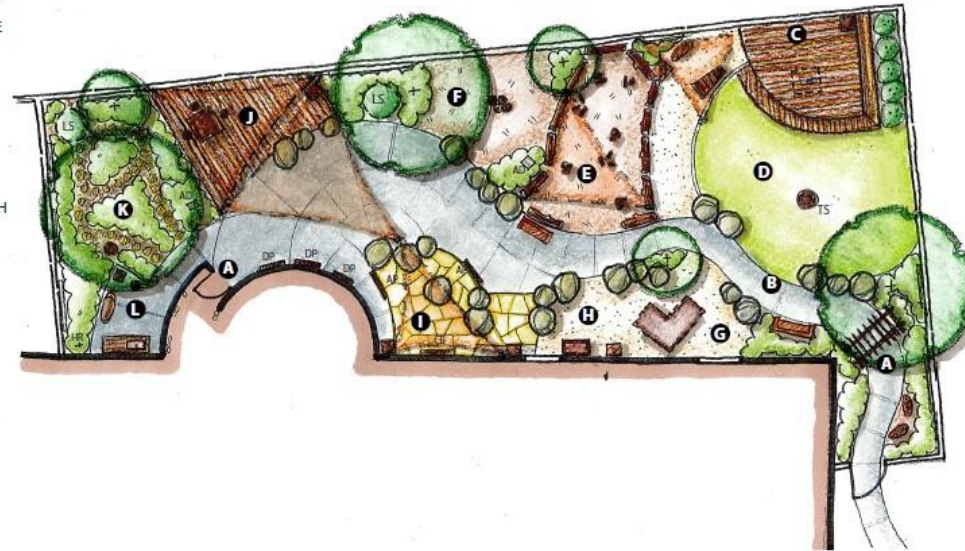
- EXISTING TURFGRASS
- CONSIDER CREATING DECORATIVE CARVING AND OR SEATING OUT OF EXISTING TREE STUMP.

E MESSY MATERIALS

- NATURAL LOG PERIMETER, ANCHORED (picture 9)
- +/-12" DEPTH EWF
- GIANT TREE COOKIES / LARGE LOOSE PARTS/ IMAGINATION FABRIC
- LOGS ACT AS ADDITIONAL SEATING FOR LARGER GROUPS
- ADD SHADE SAIL AS NEEDED

F CLIMB/BALANCE

- LOG STEPS, VARIED HEIGHTS (6"-18"), TIGHTLY GROUPED (picture 11)
- MAINTAIN 6' CLEAR USE ZONE AND APPROPRIATE SAFETY SURFACING (EWF)



LEGEND

S : STORAGE
AD: AREA DRAIN
DP: DISPLAY PANEL
AP: ART PANEL

LS: LIVING STRUCTURE
TS: TREE STUMP
HR: HOSE RISER
CB: CHALKBOARD

G WATER AREA

- COMMUNITY PLAYTHINGS CASCADE WATER TABLE OR UNIVERSAL PRECAST CONCRETE "CREEK PLAY" WATER FEATURE
- STORAGE (SHARED WITH DIRT DIGGING)

H DIRT DIGGING AREA

- ACCESSIBLE RAISED BED WITH "CLEAN" FRIABLE DIGGING SOIL (picture 6)
- STORAGE (SHARED WITH WATER)

I NATURE ART AREA

- LOCAL/REGIONAL FLAGSTONE SURFACING (REMOVE SMALL SECTION OF EXISTING CONCRETE TO EXPAND AREA) (picture 3)
- VERTICAL ART PANEL/WEAVING WALL (picture 7)
- CHALKBOARD PANEL ON BUILDING FACE
- POTENTIAL TO ADD FREESTANDING VERTICAL PANELS ON ADJACENT EXISTING CONCRETE
- STORAGE
- ADD SHADE SAIL AS NEEDED

J BUILDING AREA

- GROUND LEVEL COMPOSITE WOOD DECKING
- TABLE WITH STUMP STOOL SEATING
- STORAGE WITH VARIETY OF BLOCKS (picture 10)
- AS SHADE SAIL AS NEEDED

K PATHWAYS THROUGH PLANTINGS

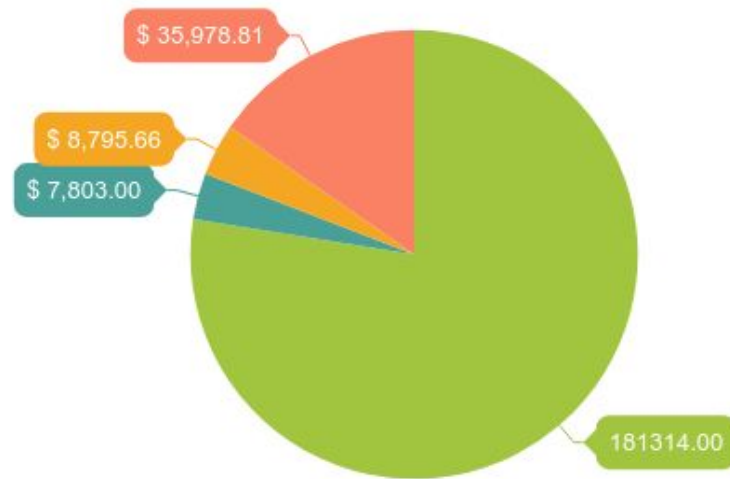
- VARIETY OF "SENSORY" GARDEN PLANTS (picture 8)
- ADD FLAGSTONE STEPPING STONES (picture 4)
- OPPORTUNITIES FOR LIVING STRUCTURES/BEAN TEEPEES
- INCORPORATE EXISTING TREE STUMP
- ADD ADDITIONAL SEATING/STUMPS AS DESIRED

L "CLEAN-UP" AREA

- OUTDOOR SINK
- ADD HOSE RISER
- BENCH/STUMP STOOL SEATING
- STORAGE WITH BRUSHES

We couldn't do it without you!

Grants & Donations



■ Redding Library (77.52%) ■ Anderson Branch (3.34%)
■ Burney Branch (3.76%) ■ Literacy Program (15.38%)

Our Friends Groups

- ✚ Our Foundation
- ✚ Our Volunteers
- ✚ Our Partners