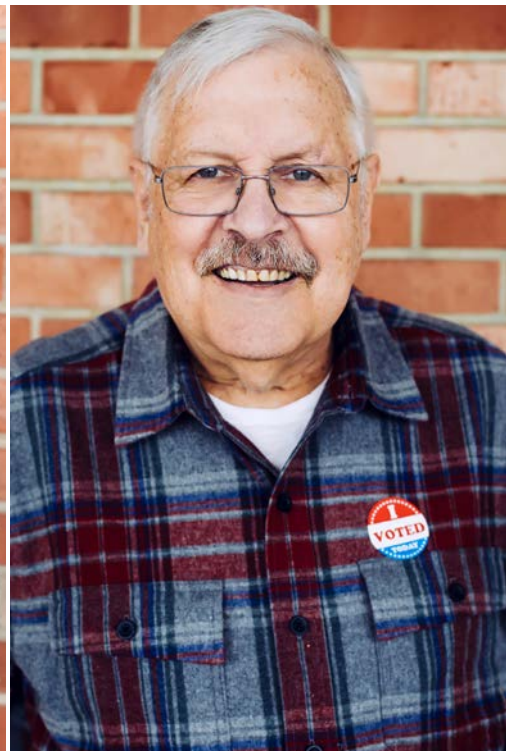




Your Voters. Our Commitment.



Learn more about ES&S at www.essvote.com

The ES&S Commitment

SECURITY



At ES&S, our focus is on ensuring that the voting equipment we make is secure, accurate and accessible. We work closely with federal, state and local government agencies to secure elections. We work hard on the strength and security of our products, and are constantly improving them. Our products are designed to federal security voting standards and undergo rigorous internal testing, quality assurance, vulnerability scans, and third-party test review before they are ever shipped to customers, and we stake our reputation on the security of our products.

POLICYMAKERS

Election officials know best the many factors that shape their election system locally. We respect the fact that different election officials may want different approaches, so our priority and focus is to provide the most secure, most efficient and most intuitive product possible based on the policy decisions state and local governments make.



PAPER & AUDITING



We support a paper record for every voter as well as post-election audits — in fact, every system ES&S builds and sells offers a physical paper ballot. The use of a physical paper record sets the stage for all jurisdictions to be able to perform statistically valid post-election audits. Audits verify that election results are accurate and instill trust in the voting process. There are many types of audits, and it is up to each state to determine how audits are implemented in their respective state.

The ES&S Vision

We will provide products and services of exceptional quality and value to maintain voter confidence and enhance the voting experience.

ES&S Products



ExpressVote®
Universal Voting System



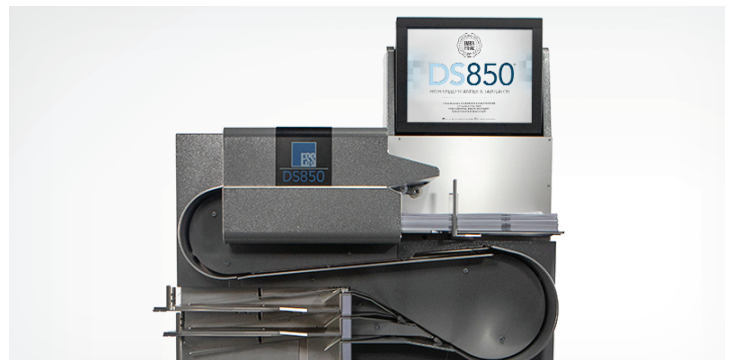
ExpressVote® XL
Full-Face Universal Voting System



DS200®
Precinct Scanner & Tabulator



DS450® High-Throughput Scanner & Tabulator



DS850® High-Speed Scanner & Tabulator

ES&S Security Philosophy

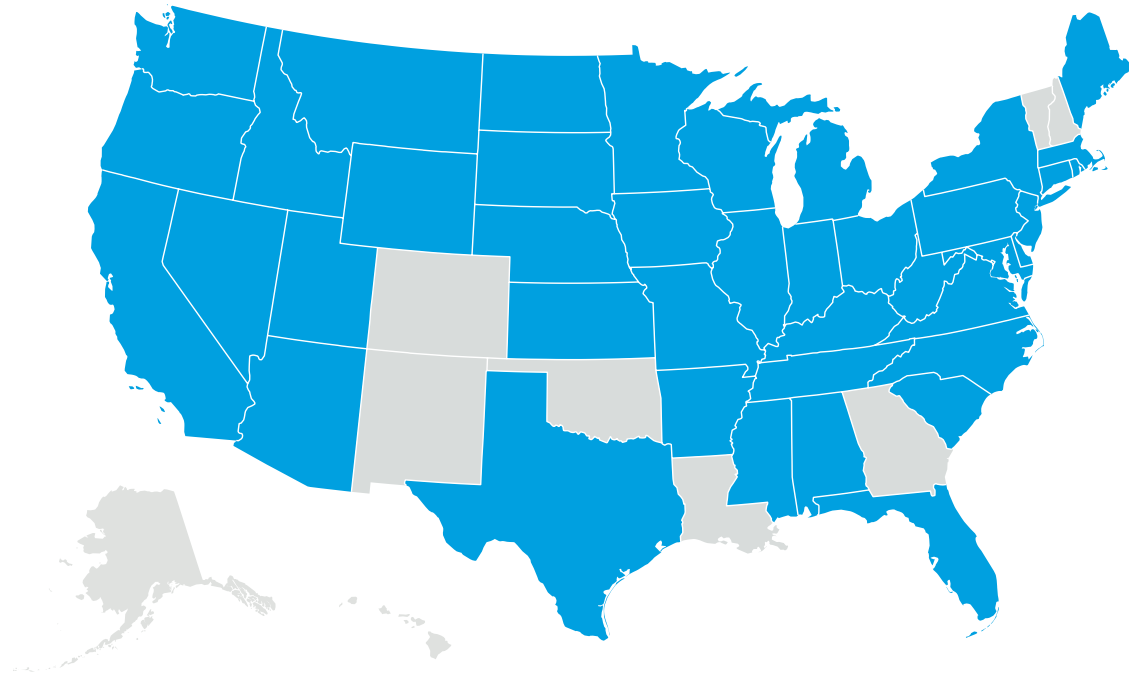
Nothing is more important to ES&S than protecting America's democracy through secure and accurate elections. That's why every ES&S product reflects the company's three-part security philosophy:

- **DESIGN:** All products are designed, without compromise, to meet the latest and ever-evolving standards in security, accuracy and reliability.
- **TESTING:** In addition to ES&S testing protocols, all tabulation systems are rigorously tested and certified by the federal Election Assistance Commission (EAC), which reflects security and performance standards developed by scientists, academia and election officials. The ES&S testing protocol also involves testing by independent, accredited laboratories. ES&S submitted our end-to-end voting configuration for Cybersecurity and Infrastructure Security Agency (CISA) critical product evaluation (CPE) at Idaho National Labs.
- **IMPLEMENTATION:** The entire ES&S team is devoted to ensuring that each piece of technology performs as expected on election day, helping election officials uphold the laws of their state which mandate strict physical security and tight chain of custody of all voting machines.

Perhaps most importantly, ES&S' essence — its very being — is predicated on providing America with secure, accurate and accessible elections. Every person at ES&S holds themselves, and each other, accountable for this mandate, and is proud to serve a role in this noble purpose.

ES&S is Proud to Serve Across the Nation

Election Systems & Software has been dedicated to secure, accurate elections for more than 40 years. ES&S is committed to supporting our customers so we have employees located around the country.

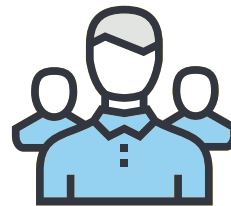


ES&S has customers in **41 states** plus the District of Columbia.



40

Years of delivering secure elections



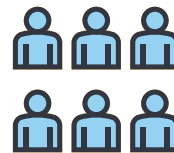
450+

**Dedicated employees
nationwide**



10,728

Elections supported in 2020



2,000+

Election Day support assignments in 2020



DS950[®]

High-Speed Scanner and Tabulator

No Rescanning

If scanning is interrupted, there's no need to rescan all the ballots. Green lights indicate a ballot has been tabulated and red lights indicate it has not been tabulated.

Less Adjudication

Intelligent Mark Recognition (IMR[®]) and Positive Target Recognition & Alignment Compensation (PTRAC[®]) technologies reduce the number of ballots requiring time-consuming manual adjudication.

Easy to Use

Touch-screen interface walks the user through the tabulation process step by step. Monitor position is adjustable for different heights and convenient storage.

Customizable, Full-Speed Sorting

No scanning interruptions for damaged ballots or ballots with exceptions. Sorts ballots into:

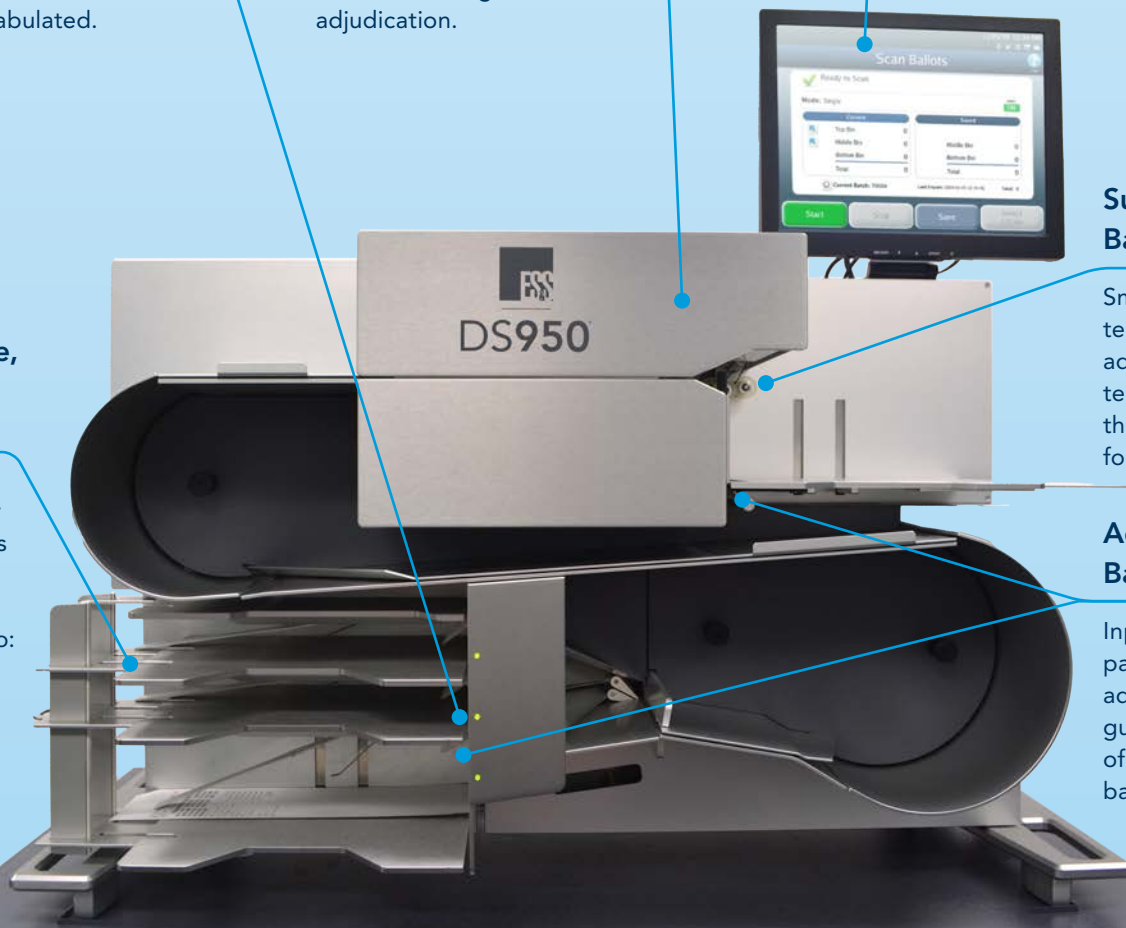
- Requires further review
- Write-ins
- Counted

Superior Ballot Feeding

Smart Pick technology auto-adjusts reverse belt tension reducing the opportunity for misfeeds.

Advanced Ballot Control

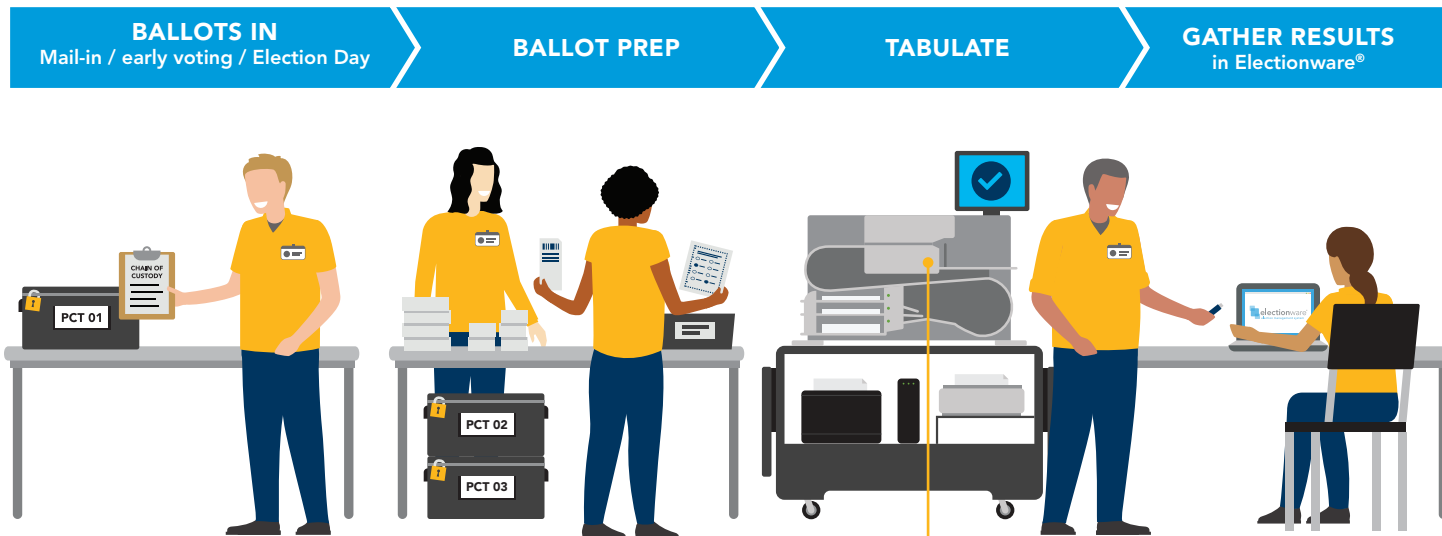
Input tray friction pad and output tray advanced ballot guide engineering offer improved ballot control.



Complete Ballot Control From Start to Finish

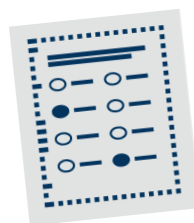
Let the DS950 handle scanning, separating and sorting ballots all without missing a beat. All ES&S tabulators scan ballots in any orientation – no need to make sure ballots are face up and top edge first before scanning.

PROCESS MORE BALLOTS IN LESS TIME



WHAT YOU **DON'T** GET WITH COMMERCIAL-OFF-THE-SHELF (COTS) TABULATORS:

- **Purpose-built equipment.** Election experts designed ES&S tabulators specifically for elections.
- **No scanning interruptions.** ES&S tabulators scan and tabulate previously folded and damaged ballots.
- **Customizable sorting.** ES&S tabulators allow for user-definable, real-time sorting, including both physical and digital ballot management.
- **Longer product life.** ES&S products are engineered with industrial-grade components, ensuring a 5-7 year production and service parts supply. Our parts manufacturers are dedicated to maintaining form, fit and functional equivalents when an inevitable change comes. This allows ES&S to support our products typically 10+ years.



280

14-inch flat ballots
processed per minute

SECURITY YOU CAN COUNT ON®



The DS950 offers so many security features, we couldn't include them all here. To learn more about the great lengths we go to protect our systems and data, visit essvote.com/feature/security.



Electionware®

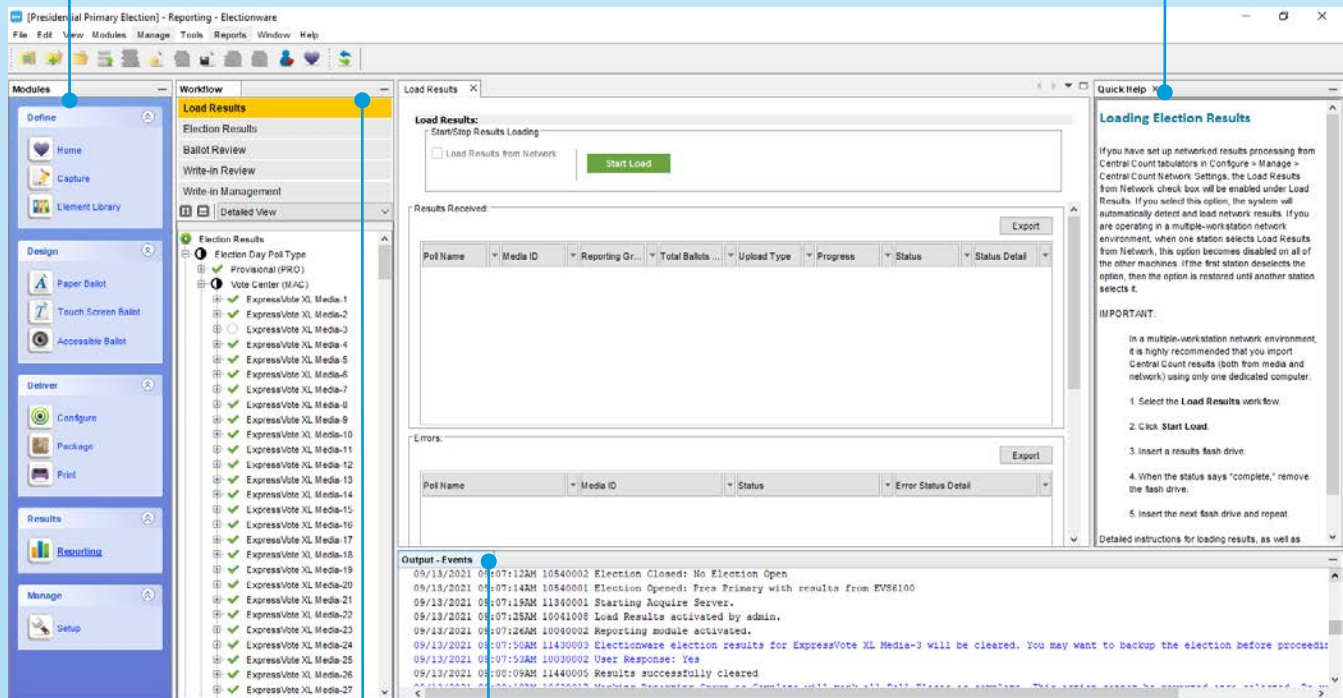
Election Management Software

Build Elections in Less Time

Easy workflow enables end-to-end election management, from data capture, ballot layout and configuring equipment to loading and reporting results.

Find Answers Easily

Interactive, comprehensive Quick Help, available in all areas of Electionware, empowers election administrators to easily find answers to common questions.



Ensure Consistent Data

Intuitive Navigator toolbar helps users organize their work and see data quickly.

Create Error-free Elections

Flexible and powerful election management software guides users through creating the election, ensuring that all election data, security codes and machine settings are added correctly to the election definition.

Easy to Master

Jurisdictions of all sizes can manage their elections through Electionware's easy-to-understand, user-friendly interface. You'll get the knack of the software in no time because the design is based on actual election workflow, making it easy to learn and navigate. The software accommodates early and overseas voting, ADA compliance, ballot adjudication and election night reporting.

WHAT'S IN IT FOR ELECTION OFFICIALS?

- **Power.** Manages thousands of ballot styles and precincts; incorporates many languages; manages and deploys multiple levels of security.
- **Intelligence.** Real-time election data queries and reports; workflow management and error alerts; enforced data accuracy; user customization; tracking of election media; helpful status indicators for incoming results.
- **Productivity.** Fast data import; reuse of election and ballot layout templates; simple translation and audio file management; multiple simultaneous users; ballot image filtering, viewing and printing.

Work Simultaneously

Electionware's multi-user functionality allows multiple authorized election personnel on a closed-network system to prepare precinct flash drives simultaneously or load results while running reports, even on different elections.

Ensure Electionwide Uniformity and Compliance

Electionware uses one database for multiple equipment types, manages nearly 15,000 ballot styles and precincts, supports numerous languages and manages and deploys multiple levels of security configurable to jurisdiction requirements.

5 COMPREHENSIVE ELECTION MANAGEMENT SOFTWARE GROUPS

Electionware gives election administrators the software tools needed to:

- **Create elections**
- **Design ballots**
- **Configure digital tabulation and accessible equipment**
- **Manage election results data**
- **Generate custom results reports**

These tasks are coordinated through Electionware's five software groups, each representing a stage of the election process.

Each group includes modules that handle specific functions for setting up an election and processing results — all of which can be configured.

| | |
|---------|--|
| DEFINE | <ul style="list-style-type: none">• Capture contests, candidate and proposition information• Import data (precincts, candidates) |
| DESIGN | <ul style="list-style-type: none">• Design paper ballots• Lay out touch-screen ballots to display single or multiple contests per screen• Configure accessibility settings |
| DELIVER | <ul style="list-style-type: none">• Set equipment access and configurations• Package data onto flash drives for use with equipment and ES&S pollbooks• Print ballots on demand with ES&S BOD |
| RESULTS | <ul style="list-style-type: none">• Load election results• Adjudicate ballots and organize write-ins• Filter information and generate reports |
| MANAGE | <ul style="list-style-type: none">• Control user access• Set security code complexity |



ExpressVote®

Universal Voting System

Avoids Overvoting

The intuitive interface also alerts voters of ballot exceptions, like undervotes.

Easier-to-Read Ballots

Visual aids include high contrast and zoom functionality.

Multilingual

Supports any language in audio and 12+ in text.



ADA-Friendly

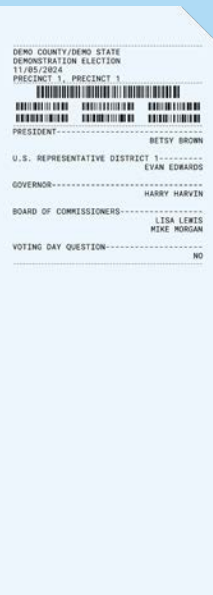
Audio-tactile keypad enables voters to control audio and navigate the ballot. The front access panel (above) features a headphone jack and a port for a sip-and-puff device or two-position rocker switch.

Simple Activation

The voter inserts a card to activate the voting session. After voting is complete, the vote summary card is dispensed for voter review.

An Accessible System with a Voter-Verifiable Paper Record

The ExpressVote is a reliable, secure and efficient system for election officials and their staff, poll workers and voters. The paper-based ExpressVote combines touch-screen voting technology with an integrated thermal printer to produce a paper record for tabulation.



EASY ELECTION MANAGEMENT



- Reduces costs by eliminating the need for printing and storing traditional pre-printed paper ballots.
- Simplifies post-election management because there are no unclear marks to adjudicate. Voters are prompted in real-time to address over/undervotes.
- Produces a voter-verifiable paper record that is scanned, tabulated and saved for auditing purposes.
- Maximizes your investment as it can be used many ways — in precincts and vote centers, during early voting and on Election Day.

POLL WORKERS LOVE IT



- Shorter Election Day for poll workers — six steps to open and two to close so they don't need to arrive as early or stay as late.
- Small, lightweight and easy to move and store.
- No ink to replace on Election Day.

A GREAT EXPERIENCE FOR VOTERS



- Enables all eligible voters to make their selections privately and independently. It is a fully compliant Americans with Disabilities Act (ADA) voting solution.
- Improves voter confidence because the interface prompts them if they've under/overvoted a contest.
- Provides voters the opportunity to review their selections twice before tabulation — on the summary screen and on the printed card.

SECURITY YOU CAN COUNT ON®



The ExpressVote offers so many security features, we couldn't include them all here. To learn more about the great lengths we go to protect our systems and data, visit essvote.com/feature/security.



Canvass and hand count went very smoothly; that ballot was easy to read and easy to determine the voter's intent. No overvotes."

VERA MCCORMICK,
KANAWHA, WEST VIRGINIA, COUNTY CLERK

SPECIFICATIONS

Ballot style capacity: Up to 15,000

Languages supported: Any language in audio and 12+ in text

Assistive devices supported: Headphones, audio-tactile keypad, rocker switch device, sip-and-puff device

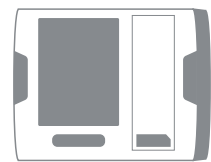
Dimensions (H x W x D):



Operational - 16" x 20" x 17"

Weight: 25 pounds

Battery backup: 2-4 hours



Stored - 17" x 20" x 5"



Supply Chain Assurance

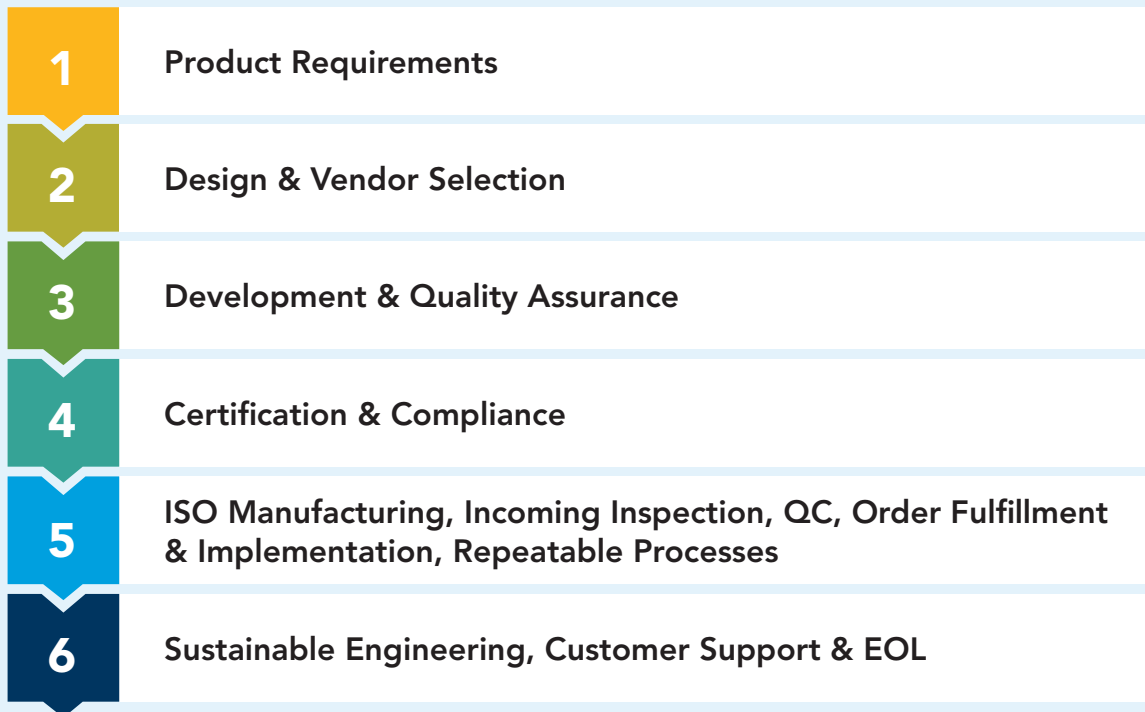
The ability to securely and accurately tabulate ballots begins with protecting the integrity of the equipment used to conduct elections. It's why ES&S takes a comprehensive approach to protect the company's supply chain and deliver solutions that states, jurisdictions and voters can trust. ES&S works with a wide range of supply chain stakeholders to maintain the most secure supply chain possible. With rigorous inspections at every step of the ES&S product life cycle process, ES&S works hard to ensure the integrity of every aspect and component of the company's supply chain.

This document provides a brief overview of ES&S' robust governance mechanisms and supply chain security and integrity practices for the manufacturing of our purpose-built tabulation products.

CONTINUOUS RISK ASSESSMENT AND IMPROVEMENT

The six phases of ES&S' product life cycle serve as a roadmap for the company's security strategy.

ES&S Product Life Cycle – Sustainability & Supply Chain Security



1

Product Requirements

These initial product requirements include security-focused steps such as setting requirements in standards, development and partner vetting.

2

Design & Vendor Selection

ES&S meets with top engineers and management to evaluate their ability and willingness to meet the company's revision control notification requirements before changes are implemented. The companies that make up ES&S' supply chain are certified and audited by the International Organization for Standardization (ISO). This requirement ensures established processes and protocols are followed.

3

Development & Quality Assurance

ES&S controls more aspects of the design, manufacturing and maintenance of its election equipment than other providers in the industry because the company uses a purpose-built product strategy. This provides better control over which components are used and approval requirements of when each component is changed.

From the standpoint of security, not all parts are equal. Many parts are inert and cannot be compromised, such as a plastic shield for voting privacy. ES&S' top, most robust security measures are in place for any part considered to be a programmable logic device (PLD) — PLDs contain software, firmware or low-level settings, and they control how the equipment operates. ES&S pays extremely close attention to and has robust security protocols in place for sensitive items like PLDs.

ES&S controls more aspects of the design, manufacturing and maintenance of its election equipment than other providers in the industry.

4

Certification & Compliance

ES&S voting systems undergo a series of functional and environmental tests to ensure they meet or exceed the demanding test requirements set by the EAC. Further testing is conducted at the state level to ensure state-specific features perform as needed.

5

ISO Manufacturing, Incoming Inspection, QC, Order Fulfillment & Implementation, Repeatable Processes

ES&S employs multiple layers of protection include using only authorized suppliers for parts acquisition, ISO certified contract manufacturers, incoming parts inspections, quality control checks, firmware verification audits, QC configuration and equipment testing at customer sites.

6

Sustaining Engineering, Customer Support & EOL

This product life cycle concludes with sustainable engineering. While the word sustainability has come to mean many things in the elections industry, ES&S' role in sustainability primarily serves a need for reliable, timely equipment maintenance and certification of operability.

ES&S' strong financial standing, vast supplier relationships, large customer base and extensive research and development capability provide a foundation for long-term availability of its products and parts.

SUPPLIER GOVERNANCE

As is the case with many critical infrastructure sectors, ES&S has certain global supply chain dependencies. ES&S' Engineering Team continually reviews the ability to source components within the U.S. However, some components are sole-sourced, protected by a patent and/or intricate to the design of the circuit or sub-assembly, so there may be limited ability to procure from alternative suppliers. ES&S' experts evaluate the risk and impact of using those components. The company also assesses safeguards to limit risk when using sensitive components in our product offerings. Every aspect of our system is under a secure Engineering Change Order (ECO) control process, regardless of where individual components are produced.

Safeguarding the performance and integrity of the supply chain is critical to supplier governance. One hundred percent of ES&S' shipping partners are Customs-Trade Partnership Against Terrorism (C-TPAT) certified—which is the U.S. Customs and Border Protection's highest level of cargo security. C-TPAT is the Authorized Economic Operator (AEO) program for the U.S. All C-TPAT certified distributors are required to demonstrate that their supply chains are secure from the point of origin to the point of distribution. Other critical infrastructure sectors, including defense and healthcare, trust and use C-TPAT certified distributors.

One hundred percent of ES&S' shipping partners are Customs-Trade Partnership Against Terrorism (C-TPAT) certified.

ES&S' manufacturers use industry-authorized distributors and qualified suppliers for all materials used in the manufacturing of the company's products, which applies regardless of country of origin. ES&S tabulation products are EAC-certified and built following federal guidelines, including the National Institute of Technology (NIST) security protocols and standards and the Center for Internet Security (CIS) Critical Security Controls. Every unit is individually serialized for complete traceability, and ES&S conducts frequent audits and documents proof that the company produces the product-to-design specifications.

Prior to onboarding, ES&S performs a thorough review of potential suppliers and partners, which can include security assessments of manufacturing partners, site surveys and procedural reviews of potential suppliers. As part of ES&S' ongoing relationship with suppliers:

- 1 ES&S conducts thorough security reviews of its supply chain, including supply chain risk assessments using the NIST Cybersecurity Framework (CSF) tools and on-site visits of ES&S' suppliers, to ensure that every component is trusted, tested and free of defects. These audits utilize both on-site quality teams, as well as site visits to confirm that contract manufacturers are following prescribed processes. ES&S contract manufacturers' procurement and supplier oversight policies are thoroughly vetted by ES&S to ensure they meet the established requirements.
- 2 ES&S monitors the inventory control practices of all contract manufacturers and third-party suppliers. Third-party facilities must meet security, physical handling, storage and segregation requirements for maintaining inventory. ES&S suppliers and contract manufacturers are monitored for quality and accuracy to ensure customers receive the best product possible. These inventory processes and controls provide day-to-day governance that augments official audits. ES&S voting systems are produced in ISO-9001 manufacturing facilities to ensure procedures are adhered to, resulting in the production of high-quality products. As the entire voting system is managed by ECOs, changes to the voting system follow a formal closed-loop process. They must be internally and externally reviewed, verified, tested and approved before they can be incorporated. Contract manufacturers are notified of approved changes following the ECO process.

Internal material handling is controlled through ES&S' warehouse control procedures, thereby limiting access to only necessary personnel, which mitigates the risk of missing or contaminated materials. All inventory is subject to incoming inspection procedures to verify the authenticity, accuracy and condition of the materials received from suppliers and contract manufacturers. Once the inspection is complete, the materials are entered into and managed by the company's inventory control system.

- 3 ES&S takes guidance from the Department of Homeland Security (DHS) to measure suppliers' security practices against industry best practices for physical security and for identifying/mitigating counterfeit components, tainted software and firmware, and intellectual property theft. When gaps are identified, ES&S issues corrective actions and works with suppliers to build their capabilities in meeting industry best practices. Developing a partnership and maintaining constant communication is critical to ensuring that suppliers and contract manufacturers understand the importance of maintaining the security of ES&S' products.
- 4 Recurring business reviews are conducted with all key suppliers to evaluate performance against ES&S' expectations. Between reviews, ES&S maintains close communication with suppliers via regularly scheduled meetings to address issues as they arise and mitigate their impact. The goal is to ensure ES&S' customers continue to receive high-level, quality products at a competitive price. Frequent executive-level interactions also help ES&S and our partners to respond quickly and effectively to changes in technology, demand, legislation or customer requirements.

SUPPLY CHAIN SECURITY

Supply chain security involves the consistent application of security initiatives, standards and measures to protect intellectual property, inventory, sensitive information and people. By focusing on physical, information, and personnel security, ES&S provides assurance by reducing opportunities for the malicious introduction of malware and counterfeit components into the company's supply chain. Security assessments are conducted on each manufacturing partner.



Physical Security

The factories where ES&S products are built must meet specific facility security requirements, including the use of closed-circuit cameras in critical areas, access controls and continuously guarded entries and exits. Additional controls are implemented at ES&S and supplier-managed facilities to address the various risks across transportation modes and regions. Some of these protections include tamper-evident packaging, security reviews of shipping lanes, locks and container integrity requirements.

ES&S uses in-transit security protocols to protect parts and assembled units as they travel between facilities and to customers. Tamper-proof seals are placed on truckloads, and access to freight terminals is restricted.



Information Security

As part of the company's normal course of business, ES&S acquires and uses sensitive information throughout the supply chain life cycle. Extensive measures are used to safeguard this sensitive information against exposure and misuse. For example, data transfers between ES&S and our partners use a combination of encryption methods and private communication channels. Where applicable, secure protocol and encapsulation technology best practices are also used. In addition, production lines are designed and built to restrict the ability to transfer information.

ES&S' internal network environment is secured through controls such as virus detection, robust password enforcement, email attachment scanning, system and application patch compliance, intrusion prevention, and firewalls. Controls have also been implemented to protect against malware and misuse of assets.

ES&S follows the principles of segregation of duties and least privilege. These principles help prevent misuse of data access across the business by ensuring access to sensitive information is only given to those who need it to perform their job.

ES&S employees, contractors, consultants, partners and any external entity operating under ES&S guidance do not accept any data containing personally identifiable information that is not needed for the specific purposes required. ES&S protects confidential data under a non-disclosure agreement (NDA) or other binding contractual provisions that restrict permissible uses and disclosures of the data.



Personnel Security

Personnel security controls are another critical part of information security and supply chain assurance. Screening employees and restricting access to data, assets and resources helps assure that internal security efforts are effective. ES&S' policy requires employees throughout the supply chain, including those at contract suppliers, go through a pre-employment screening process. This process includes security background checks, drug screening, identity verification and application verification as applicable and permissible by law.

As part of ES&S' annual security training, all employees, contractors, temps and interns (ECTi) are required to complete courses regarding information security and other ES&S security practices. All ECTis are also required to complete an annual comprehensive security training program that covers a wide range of cyber and physical security threats, mitigating controls, realistic scenarios and content module tests. This training program emphasizes good cyber hygiene to be used at home and at work to build respect for and awareness of cyber threats to ES&S' business.

SUPPLY CHAIN INTEGRITY

ES&S' strong supply chain integrity ensures equipment received by the customer is what the customer expected and that the equipment will operate as intended. A fundamental aspect of supply chain integrity is the development of a baseline specification of hardware and software that is safeguarded and used as a reference to verify there have been no unauthorized modifications.



Hardware

A variety of quality control processes are in place to help minimize the opportunity for counterfeit components to infiltrate the ES&S' supply chain. Parts are sourced from authorized distributors, and in the event parts need to be sourced from brokers, those parts are sent to U.S.-based third-party labs for authentication.

ES&S conducts thorough security reviews of its supply chain, including supply chain risk assessments and on-site visits to key suppliers.

ES&S' Quality Management System confirms continued adherence to engineering specifications and processes, including sourcing from approved vendors. Each part, regardless of origin, undergoes a thorough incoming inspection by ES&S contract manufacturers before the assembly process. Once units are assembled, ES&S uses a domestic third-party expert to perform firmware verification on a sample of units in each container to confirm no malicious or unwarranted software is present.

Additionally, ES&S conducts thorough security reviews of its supply chain, including supply chain risk assessments and on-site visits to key suppliers to ensure that components are trusted, tested and free of malware. Once the hardware components are delivered to Omaha, ES&S performs several essential steps, including:

- Verification that the firmware on the PLDs within the hardware is exactly what it is expected it to be and not altered in any way
- Final hardware configuration
- Final end-to-end QC test which includes loading of the certified software and firmware



Software

Proactive verification, validation and security testing activities throughout the life cycle help ensure more secure software and reduce the likelihood of malware or coding vulnerabilities from being inserted into software. A robust cybersecurity program improves software integrity by preventing unauthorized access to source code and minimizing the potential for malware to be introduced into a product before it is shipped to the customer.

ES&S carefully monitors all software included in the company's solutions to ensure that these solutions continue to meet evolving security needs. If any gaps are highlighted in these software products, ES&S works to ensure the gap is mitigated either through software updates or segmentation of the software.

Part of each ES&S software release includes a review of all software components included in the release. This review consists of an analysis of the security features and any highlighted vulnerabilities. The ES&S security team carefully monitors all highlighted vulnerabilities to determine if any action is required to address the vulnerability. Firmware is verified upon delivery to customers.

In addition, as standard practice to ensure the proper performance of ES&S equipment, each hardware and software release undergoes thousands of hours of independent performance testing and millions of test ballots, along with extensive security testing, after which ES&S provides a complete set of software components to the voting systems testing labs (VSTL) for review.

Each hardware and software release undergoes thousands of hours of independent performance testing and millions of test ballots, along with extensive security testing.

STRONGER TOGETHER

- ES&S is committed to partnering with leading organizations that further the development of standards and industry best practices for mitigating supply chain and product security risks.
- ES&S is participating in discussions with DHS's National Risk Management Center (NRMCC), NIST and CIS regarding the development of guidelines and best practices for ensuring that the company stays ahead of and mitigate new or emerging risks associated with supply chain components.
- ES&S has also been actively engaged with the Multi-State Information Sharing and Analysis Center (MS-ISAC), the Elections Infrastructure Information Sharing and Analysis Center (EI-ISAC), the Elections Infrastructure Subsector Coordinating Council (EI-SCC) and the Information Technology Sector Coordinating Council (IT SCC).
- ES&S is well-positioned to leverage best practices, technology, insights and expertise. The company understands the importance of working with federal, state and local agencies, suppliers and partners to improve on and deliver supply chain assurance to its customers.





Maintaining voter confidence. Enhancing the voter experience.

Shasta County, CA
Shasta County Precinct Polling Proposal Quote
Submitted by Election Systems & Software

Purchase Solution Includes:

| Quantity | Item Description | Unit Price | Extended Price |
|--|--|--------------|-----------------------|
| Tabulation Hardware | | | |
| DS300 Poll Place Scanner and Tabulator: | | | |
| 75 | DS300 (Includes Internal Backup Battery, Paper Roll and One (1) Standard 4GB Memory Device) | \$5,995.00 | \$449,625.00 |
| 75 | DS300 Ballot Box with Power Supply and AC Cord | \$880.00 | \$66,000.00 |
| ExpressVote Universal Voting System: | | | |
| 75 | ExpressVote BMD (Includes Internal Backup Battery, ADA Keypad, Headphones, Power Supply with AC Cord, and One (1) Standard 4GB Memory Device) | \$3,660.00 | \$274,500.00 |
| 75 | ExpressVote Soft-Sided Case | \$250.00 | \$18,750.00 |
| 13 | Tabletop ExpressVote Privacy Screens (6 per case) | \$130.00 | \$1,690.00 |
| DS950 High-Speed Scanner and Tabulator: | | | |
| 4 | DS950 (Includes Steel Table/Cart, Start-Up Kit, Dust Cover, Reports Printer, Battery Backup, USB Cable, and Two (2) Standard 8GB Memory Devices) | \$133,100.00 | \$532,400.00 |
| Third Party Products: | | | |
| 1 | EMS 3rd Party Hardware (Networked) | \$25,990.00 | \$25,990.00 |
| Ballot on Demand Hardware | | | |
| 3 | Compact Color Printer with Firmware (For use with BOD Laptop or EMS Server) | \$1,245.00 | \$3,735.00 |
| 3 | Laptop Computer with Router | \$1,650.00 | \$4,950.00 |
| Software | | | |
| 1 | Electionware Election Management Software - Reporting Only Base Package | \$9,845.00 | \$9,845.00 |
| 3 | Balotar Software License | \$3,575.00 | \$10,725.00 |
| X | Single Request Capability Only | | |
| Election Services | | | |
| 20 | Implementation Services | \$1,975.00 | \$39,500.00 |
| X | Project Management | | |
| X | Tabulation Equipment Operations Training | | |
| X | Poll Worker Train-the-Trainer | | |
| X | Tabulation Software Training | | |
| X | Central Scanner Training | | |
| X | Ballot on Demand Training | | |
| 3 | Election On-Site Support | \$5,475.00 | \$16,425.00 |
| X | Equipment Installation | | \$26,575.00 |
| X | 1 Year Hardware and Software Warranty | | Included |
| X | Shipping and Handling | | \$18,200.00 |
| Total Purchase Solution | | | \$1,498,910.00 |
| Purchase Payment Terms | | | |
| Amount due within thirty (30) calendar days of contract execution: | | | \$749,455.00 |
| Amount due within thirty (30) calendar days of delivery of Hardware and/or Software: | | | \$749,455.00 |

| | |
|---|-------------------|
| Lease/Purchase Financing Option: | Annual Pmt |
| Annual Payment for a Five (5) Year Term | \$338,676.00 |

Lease/Purchase Financing Notes:

1. First Payment due at contract execution and annually thereafter.
2. Payments do not include Annual Post-Warranty License and Maintenance and Support Fees which will be invoiced separately.



Maintaining voter confidence. Enhancing the voter experience.

Shasta County, CA
Shasta County Precinct Polling Proposal Quote
Submitted by Election Systems & Software

Purchase Solution Includes:

| Quantity | Item Description | Unit Price | Extended Price |
|---|--|-------------|--|
| Annual Post-Warranty License and Maintenance and Support Fees (Fees are Based Upon a 1-Year Customer Commitment to Subscribe to the Following Services) | | | |
| Annual Post-Warranty Hardware Maintenance and Support Fees: | | | |
| 75 | HMA DS300 - Extended Warranty with Annual Maintenance | \$205.00 | \$15,375.00 |
| 75 | HMA ExpressVote BMD - Extended Warranty with Annual Maintenance | \$130.00 | \$9,750.00 |
| 4 | HMA DS950 - Extended Warranty with Annual Maintenance | \$4,395.00 | \$17,580.00 |
| Annual Post-Warranty Firmware License and Maintenance and Support Fees: | | | |
| 75 | Firmware License - DS300 | \$95.00 | \$7,125.00 |
| 75 | Firmware License - ExpressVote | \$75.00 | \$5,625.00 |
| 4 | Firmware License - DS950 | \$1,795.00 | \$7,180.00 |
| Annual Post-Warranty Software License and Maintenance and Support Fees: | | | |
| 1 | Electionware Election Management Software - Reporting Only Base Package | \$9,845.00 | \$9,845.00 |
| 3 | Balotar Software License | \$787.00 | \$2,361.00 |
| Total Annual Post-Warranty License and Maintenance and Support Fees | | | \$74,841.00 |
| Optional Items | | | |
| 1 | Electionware Election Management Software - PYO Base Package with English Language Synthesized Voice Files - Upgrade | \$59,895.00 | \$59,895.00 |
| 4 | Additional Electionware PYO Software Training Days | \$1,975.00 | \$7,900.00 |
| 1 | EMS 3rd Party Hardware (Non-Networked) | \$9,395.00 | \$9,395.00 |
| Consumable Items | | | |
| DS300: | | | |
| | DS300 Thermal Paper Roll | | \$2.00 |
| | DS300 Imprinter Ink Cartridge | | \$35.00 |
| | DS300 Backup Battery - Installed by Trained ES&S Personnel Only | | \$185.00 if replaced during scheduled Preventative Maintenance visit |
| | DS300 Coin Cell Motherboard Battery - Installed by Trained ES&S Personnel Only | | \$11.00 if replaced during scheduled Preventative Maintenance visit |
| ExpressVote: | | | |
| | ExpressVote Blank Ballot Card Stock - 11" (250 per pkg) | | \$25.00 |
| | ExpressVote Blank Ballot Card Stock - 14" (250 per pkg) | | \$26.25 |
| | ExpressVote Blank Ballot Card Stock - 17" (250 per pkg) | | \$28.75 |
| | ExpressVote Blank Ballot Card Stock - 19" (250 per pkg) | | \$32.50 |
| | ExpressVote Backup Battery - Installed by Trained ES&S Personnel Only | | \$185.00 if replaced during scheduled Preventative Maintenance visit |
| | ExpressVote Coin Cell Motherboard Battery - Installed by Trained ES&S Personnel Only | | \$11.00 if replaced during scheduled Preventative Maintenance visit |
| DS950: | | | |
| | DS950 Imprinter Ink Cartridge | | \$70.00 |
| | DS950 UPS Backup Battery | | \$515.00 |
| Ballot On Demand: | | | |
| | Blank BOD Paper Stock | | \$0.12 |
| | Black Toner | | \$110.00 |
| | Cyan Toner | | \$170.00 |
| | Magenta Toner | | \$170.00 |
| | Yellow Toner | | \$170.00 |
| | Drum Kit | | \$160.00 |
| | Waste Toner | | \$36.00 |

Consumables Note: We have included pricing for the most commonly requested Ancillary Supplies purchased from ES&S in support of the specific equipment offerings. There may be other items the County may want to purchase that are not listed above. Should the County decide to order any product not listed in our above pricing, ES&S will invoice the County at the then current price. Shipping and Handling is not included in pricing and will be billed separately. Consumables prices are subject to change without notice.



Maintaining voter confidence. Enhancing the voter experience.

Shasta County, CA
Shasta County Precinct Polling Proposal Quote
Submitted by Election Systems & Software

Purchase Solution Includes:

| Quantity | Item Description | Unit Price | Extended Price |
|----------|------------------|------------|----------------|
|----------|------------------|------------|----------------|

Ballot On Demand Election Set-Up Fees per Election Event

Black and White Ballot Set-Up:

\$475.00 per election set-up + \$1.75 per unique PDF for first Computer,
\$42.00 for each additional Computer Set-up

Color Ballot Set-Up:

\$575.00 per election set-up + \$1.75 per unique PDF for first Computer,
\$42.00 for each additional Computer Set-up

Rework of set up due to customer changes after initial set up is complete:

\$130.00 per change event for first Computer Set-Up
\$42.00 for each additional Computer Set-Up

L&A Test Deck Creation: \$375.00

On-Site Set-Up: \$1,975.00 per person, per day

Ballot Layout, Coding and Voice Files Fees

| Paper Ballot Layout (Price per Ballot Face) | |
|---|----------|
| English and Spanish (Combined) | |
| 1 to 500 Faces | \$41.95 |
| 501 or more Faces | \$36.00 |
| Languages other than English/Spanish | |
| 1 to 500 Faces, per Language | \$85.00 |
| 501 or more Faces, per Language | \$71.50 |
| Base Charge for Ballot On Demand (BOD) | \$640.00 |

| Electronic Screen Layout - ExpressVote | |
|---|---------|
| English and Spanish (Combined): | |
| Per Ballot Style, or precinct, whichever is greater | \$26.25 |
| Languages other than English/Spanish | |
| Per Ballot Style, or precinct, whichever is greater | \$48.00 |

Notes:

1. Electronic Screen Layout does NOT apply to ExpressVote customers when ES&S performs paper ballot layout and voice file services.

| Programming Services | |
|--|---|
| Base Charge per Equipment Type | \$600.00 |
| Base Charge for ERM file set-up | \$600.00 |
| Ballot types created (open primary or multiple-page ballots) | \$90.00 |
| Precincts (for every precinct in the election) | \$10.75 |
| Splits (for every additional ballot style within a precinct.) | \$10.75 |
| Ballot Face Configurations (every unique ballot face in the election) | \$19.25 |
| Contest / Issue Entries (total number of contests, referenda, questions, and/or propositions in the election) | \$21.00 |
| Candidate / Response Entries (total number of candidates &/or responses, including referenda and all write-ins for each contest/issue) | \$9.00 |
| Headers (Central Tabulators) | \$2.40 |
| Re-Coding Fees | \$600 + applicable fee for each changed element |

| Voice Files | |
|---|--|
| Language Setup Charge - English | \$400.00 |
| Language Setup Charge - Spanish | \$400.00 |
| Language Setup Charge - All Other languages | \$600.00 |
| Political Parties (Fee Billed Per Element, Per Language) | \$6.00 |
| Ballot Faces (Fee Billed Per Element, Per Language) | \$18.00 |
| Contests / Issues (Fee Billed Per Element, Per Language) | \$19.00 |
| Candidates / Yes-No Responses (Fee Billed Per Element, Per Language) | \$12.00 |
| Propositions / Amendments / Instructions (Fee Billed Per Element, Per Language) | \$24.00 |
| Price per word in excess of 1200 total words (Instructions / Propositions / Amendments) | \$0.42 |
| Resubmission | \$400 for English & Spanish and \$600 (for each additional language), plus the applicable fee for each element changed for each language |



Maintaining voter confidence. Enhancing the voter experience.

Shasta County, CA
Shasta County Precinct Polling Proposal Quote
Submitted by Election Systems & Software

Purchase Solution Includes:

| Quantity | Item Description | Unit Price | Extended Price |
|--|---|------------|----------------|
| Other Services (Standard Overnight Delivery Charges Will Apply and Will Be Billed Separately) | | | |
| | Media burn (Flash / PCMCIA Cards, Mem Packs, PEBs, and Jump Drives) | | \$14.25 |
| | Electronic transfer files (Charge per county, per election) | | \$141.75 |
| | SOS Media | | \$85.50 |
| | .pdf File Extraction (per Style) | | \$1.75 |
| | Sample Ballot Creation | | \$45.50 |
| | Publication Ballot Creation (Ballot Layout As Is) | | \$210.00 |
| | Custom Publication Ballot Creation | | \$400.00 |
| | ESSIM Test Deck Creation (Does not include print costs) | | \$375.00 |
| | Auto Test Deck PDF Creation (\$21.50 per Style. Minimum Charge of \$215.00) | | \$215.00 |
| | Ballot Assignment Chart | | \$455.00 |
| | Download Results From Media | | \$75.00 |
| | ERM State Utility File | | \$485.00 |

Footnotes:

1. This quote is an estimate and is subject to final review and approval by both ES&S and the Customer.
2. Rates valid for thirty (30) days and thereafter may change.
3. Any applicable (City & State) sales taxes have not been included in pricing and are the responsibility of the customer.
4. Subject to state, municipal, jurisdictional, provincial or territory laws to the contrary, the above pricing information is confidential, proprietary and trade secret information of ES&S and is intended only for the use of the individual or entity to which the document is directed to. This information may not be disclosed or reproduced either publicly or to any other individual or entity without the prior written authorization of ES&S.
5. The quantity of service days reflects a reasonable estimate for implementation and selected ongoing election services. Quantities may change depending on specific Customer needs.

Ballot On Demand Footnotes:

1. Customer is responsible for purchasing blank ballot stock and consumables.
2. ES&S shall provide a warranty to the Customer for the Ballot on Demand Printer ("Printer") in coordination with the manufacturer of the Printer that shall commence upon delivery and terminate upon the earlier of: (1) three (3) years from the date of delivery (the "Maximum Coverage Period"), or (2) the end of the life of the fuser unit in the Printer. In the event that Customer desires to make a warranty claim prior to expiration of the Maximum Coverage Period, the parties shall determine if the warranty has expired by printing a printer settings sheet which displays the remaining life of the Printer's fuser unit. ES&S warrants during the Warranty Period it, in coordination with the manufacturer of the Printer, will replace a Printer which, while under normal use and service: (i) fails to perform in accordance with its Documentation in all material respects, or (ii) is defective in material or workmanship. The Warranty shall not include the repair or replacement of any Consumables. Any replaced Printer shall be warranted only for the unexpired term of the Warranty Period.