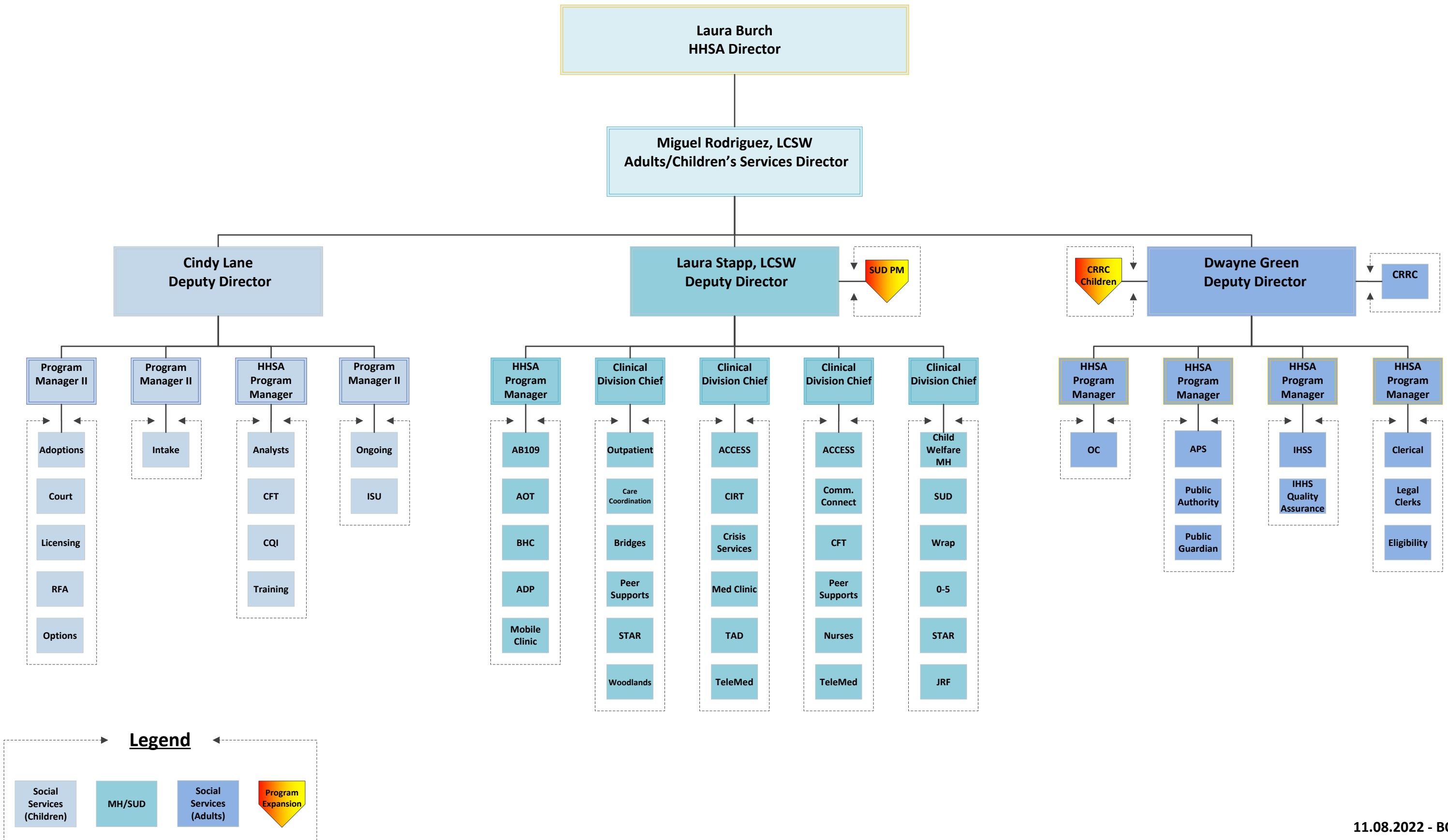
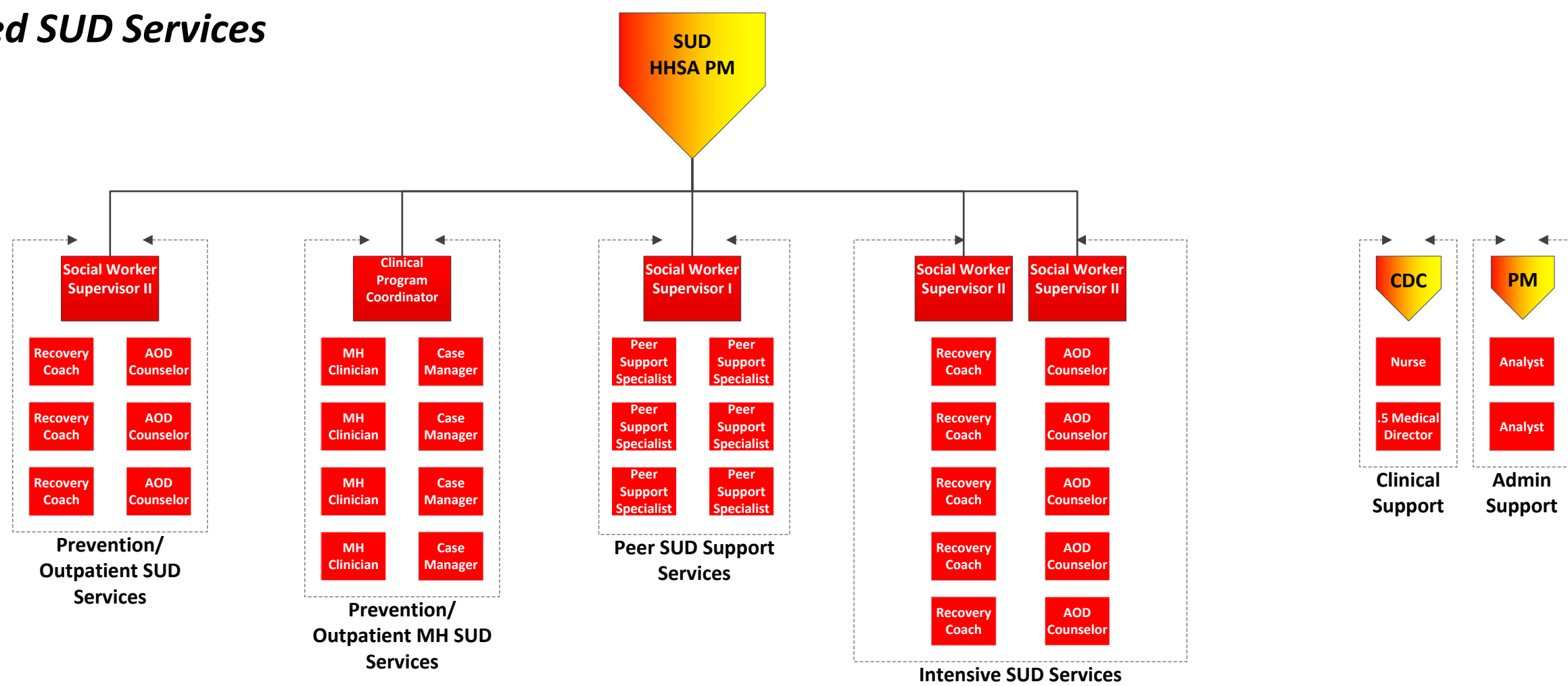


Behavioral Health & Social Services Branch



Proposed SUD Services



Prevention SUD Services: Typically known as Early Intervention. Early intervention can consist of assessment and education for people at risk of developing a substance use disorder, or programs like DUI classes for people arrested for driving under the influence. This is known as level .5 and the goal is to intervene before a person develops a substance use disorder.

Outpatient Services: consists of treatment for substance use that is less than 9 hours a week. This is known as level 1 which is appropriate for people with less severe disorders, or as a step-down from more intensive services.

Intensive outpatient services: consisting of at least 9 and no more than 20 hours per week of treatment. This is known as Level 2.1 and programs typically offer care 24 hours a day by phone or within 72 hours in person.

Proposed Children's CRRC

